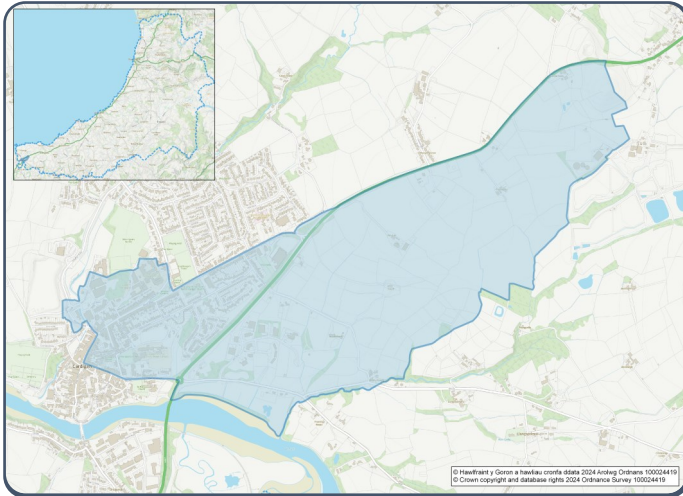


# 2021 Census Area Profiles – Lower Super Output Area (LSOA) W01000510 - Cardigan Rhyd-y-Fuwch



## Population:



**1,182 residents**



**Females**  
607



**Males**  
575

**Population Change**  
(2011-2021)  
▼ **-3.6%**

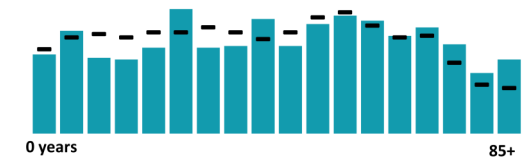
**57 Students**

(people over 16 who are engaged in full-time courses of study in secondary, tertiary or higher education institutions)

**15.3% aged 0 - 14**      **2.7% BAME**  
**59.3% aged 15 - 64**    **97.3% White**  
**25.4% aged 65+**        **0.0% Other Ethnic Group**

Age profile

■ Cardigan Rhyd-y-Fuwch – Wales



## Health & Disability:



**29.7%**

**Disabled under the Equality Act**



**16.2%**

**Day-to-day activities limited a lot**



**69.0%**

**In good or very good health**



**10.1%**

**Provides unpaid care**

## Households:



**627 Households**



**0.8%**

**Households without central heating**



**65.7%**

**Households deprived in one or more deprivation dimensions**



**0.6% Overcrowded Households**

## Welsh Language:



**47.3%**

**Can speak Welsh**

**Age breakdown of Welsh speakers**

**0-15: 9.5%**

**16-64: 26.1%**

**65+: 10.5%**



**37.6%**

**Have NO skills in Welsh**

## Economy:



**47.7% Employment Rate**



**14.8% Achieving level 2 qualification**



**50.4% Economic Inactivity**



**22.9% No Qualifications**

## Demography, Ethnicity, Identity & Religion:

	LSOA		Ceredigion
	No.	%	%
<b>Population</b>			
Population 2021	1,182	-	71,475
Population 2011	1,226	-	75,922
<i>Population change (2011-21)</i>	- 44	- 3.6%	- 5.8%
Population density	576.5	-	40.0
<b>Sex</b>			
Males	575	48.6%	48.9%
Females	607	51.4%	51.1%
<b>Age</b>			
Aged 0 to 4	56	4.7%	3.8%
Aged 5 to 19	177	15.0%	16.1%
Aged 20 to 29	148	12.5%	14.0%
Aged 30 to 44	201	17.0%	13.8%
Aged 45 to 59	222	18.8%	19.3%
Aged 60 to 64	79	6.7%	7.2%
Aged 65 to 74	143	12.1%	13.9%
Aged 75 and over	157	13.3%	11.8%
<b>Country of birth</b>			
Born in UK	1,103	93.3%	92.9%
Born outside of UK	79	6.7%	7.1%
<b>National Identity</b>			
One or more UK identity	1,118	94.6%	93.4%
UK identity and non-UK identity	12	1.0%	1.7%
Non-UK identity	52	4.4%	4.9%
<b>Religion</b>			
Christian	481	40.7%	46.7%
No religion	614	52.0%	43.0%
Other religion	13	1.1%	2.6%

## Housing & Household Composition:

	LSOA		Ceredigion
	No	%	%
<b>Tenure</b>			
Owned	251	40.0%	68.6%
Private rented	148	23.6%	20.6%
Social rented	224	35.7%	10.5%
Shared ownership	3	0.5%	0.3%
Lives rent free	1	0.2%	0.0%
<b>Accommodation Type</b>			
Detached	92	14.7%	50.7%
Semi detached	154	24.6%	23.1%
Terraced	212	33.8%	14.1%
Flat, maisonette or apartment	169	27.0%	11.3%
Caravan or other mobile temporary	0	0.0%	0.8%
<b>Household composition</b>			
One person household	329	52.5%	33.0%
Single family household	275	43.9%	60.4%
Other household types	23	3.7%	6.6%
<b>Central Heating</b>			
No central heating	5	0.8%	2.6%
<b>Occupancy Rating</b>			
Overcrowded households	4	0.6%	1.4%
<b>Number of bedrooms</b>			
1 bedroom	159	25.4%	7.4%
2 bedrooms	186	29.7%	23.6%
3 bedrooms	181	28.9%	42.5%
4+ bedrooms	101	16.1%	26.5%
<b>Number of cars or vans</b>			
No car or van	218	34.7%	15.7%
<b>Deprivation</b>			
Households deprived in one or more deprivation dimensions	412	65.7%	52.9%

## Labour Market & Education:

	LSOA		Ceredigion
	No	%	%
<b>Economic activity status</b>			
Economically active (in employment)	446	45.1%	46.8%
Economically active (unemployed)	26	2.6%	1.8%
Economically inactive	499	50.4%	47.9%
<i>Retired</i>	258	26.1%	27.7%
<i>Student</i>	40	4.0%	10.0%
<i>Looking after home or family</i>	48	4.8%	3.5%
<i>Long-term sick or disabled</i>	131	13.2%	4.4%
<b>Top 3 Industries</b>			
Distribution, hotels and restaurants	135	29.5%	21.8%
Public administration, education and health	117	25.5%	35.5%
Financial, real estate, professional and administrative activities	55	12.0%	10.5%
<b>Education</b>			
No Qualifications (all aged 16+)	227	22.9%	14.7%
Qualifications Level 2	147	14.8%	13.7%
Apprenticeship	65	6.6%	5.4%
<b>Travel to Work</b>			
Work mainly at/from home	80	17.5%	31.6%
Driving car/van	206	45.0%	51.1%
Bus	8	1.7%	1.3%
On foot	118	25.8%	10.0%